

***Claim: Global warming is causing snow to disappear***

***REBUTTAL***

This is one claim that has been repeated for decades even as nature showed very much the opposite trend with unprecedented snows even to the big coastal cities. Every time they repeated the claim, it seems nature upped the ante more.

Alarmists have eventually evolved to crediting warming with producing greater snowfall, because of increased moisture but the snow events in recent years have usually occurred in colder winters with high snow water equivalent ratios in frigid arctic air.

The eastern United States as an example had 29 high impact winter snowstorms the last 10 years. No prior ten-year period had more than 10.

Snowcover in the Northern Hemisphere, North America and Eurasia has been increasing since the 1960s in the fall and winter but declining in the spring and summer. However, as NOAA advised around 2000 might be the case, snowcover measurement methodology changes (automated instead man/machine) at the turn of this century may be responsible for part of the warm season differences.

'Global warming' is not causing snow to disappear.

-----

On March 20, 2000, the UK Independent, reported that "Snowfalls are just a thing of the past". They quoted David Viner of the Climatic Research Unit (CRU) of the University of East Anglia "Global warming was simply making the UK too warm for heavy snowfalls. *Within a few years winter snowfall will become "a very rare and exciting event". "Children just aren't going to know what snow is," he said.*

Similarly, David Parker, at the UK's Hadley Centre for Climate Prediction and Research, said that eventually British children could have only "virtual" experience of snow via movies and the Internet.

In the winters that followed snows fell in the UK and Europe unlike they had seen since the Dalton Minimum in the early 1800s.

The Union of Concerned Scientists (UCS) said in 2006 [Scientists claim winters becoming warmer and less snowy](#). They published the results of the study on its [climatechoices](#) website: *“Across the globe, and here in the Northeast, the climate is changing. Records show that spring is arriving earlier, summers are growing hotter, and winters are becoming warmer and less snowy. These changes are consistent with global warming, an urgent phenomenon driven by heat-trapping emissions from human activities”*

*The IPCC and US government reports through 2007 had projected snows would become much less common as the climate warms especially in the cities.* The UCS had a media workshop in the late summer of 2007 on Mt. Washington promising a dire future for the winter sports and maple sugar industries That next winter all-time seasonal snow records were set for snowfall in the northeast from Concord to Caribou (and all through the western US up to Alaska).

The Technical Support Document for the EPA in 2009 (page 29) stated: *“Rising temperatures have generally resulted in rain rather than snow in locations and seasons where climatological average (1961–1990) temperatures were close to 0°C.”*

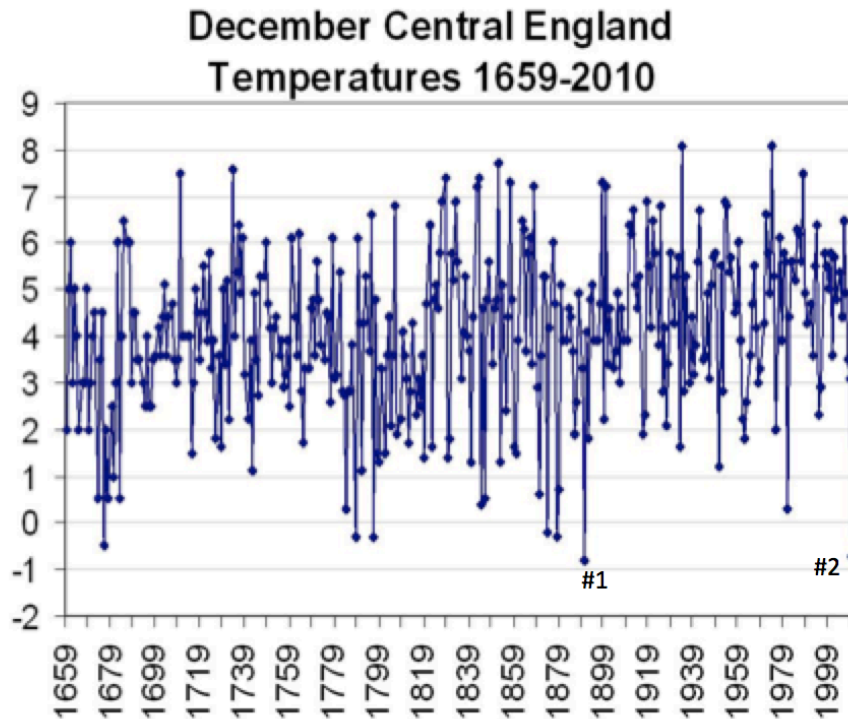
*The latest CSSR NCA had as a key finding: “There has been a trend toward earlier snowmelt and a decrease in snowstorm frequency on the southern margins of climatologically snowy areas (medium confidence). Winter storm tracks have shifted northward since 1950 over the Northern Hemisphere (medium confidence).”*

Princeton Environmentalist Michael Oppenheimer and RFK Jr, in 2008 both bemoaned their children in the DC area would never get to enjoy sledding like they did as young in the 1960s. That very next winter, the DC area and the entire Mid-Atlantic had record snowfall in what was called Snowmageddon.

## 2009/10 All-Time Record Snowfall

City	Snowfall (in)	Previous Record (Year)
Baltimore	79.9	62.5" (1995-1996)
Washington (Dulles International Airport)	72.8	61.9" (1995-1996)
Washington (Reagan National Airport)	55.9	54.4" (1898-1899)
Wilmington, Del.	66.7	55.9" (1995-1996)
Philadelphia	71.6	65.5" (1995-1996)
Atlantic City, N.J.	49.9	46.9" (1966-1967)

Starting in 2008, the UK and much of Europe and the Northern Hemisphere began receiving snow and cold at levels not seen since the days of Charles Dickens in the 1800s. December 2010 in the snow, was the second coldest December in the Central England Temperature (CET) data back to 1659.



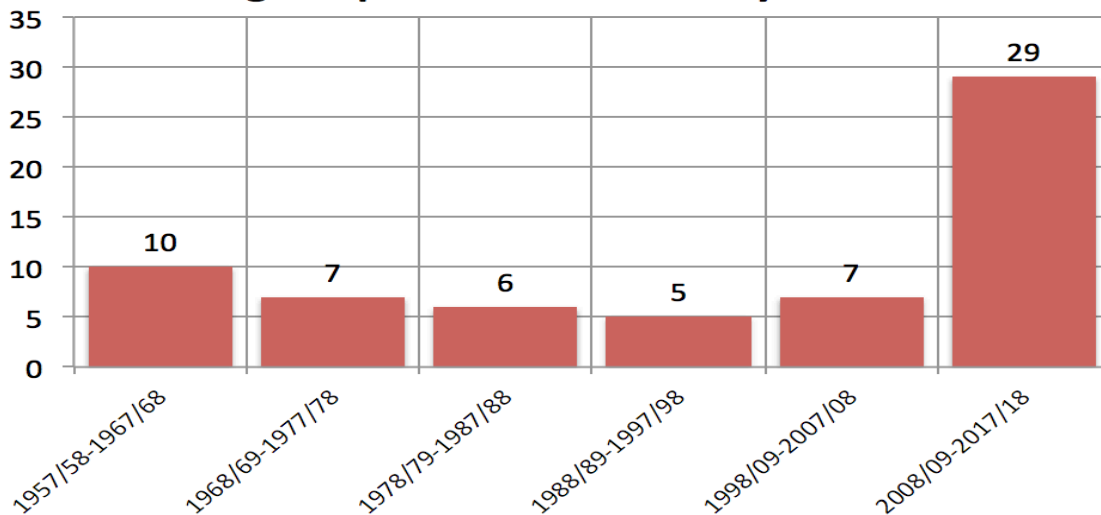
In the United States, the winter of 2013/14 was the coldest and snowiest since the 1800s in places in the Great Lakes. 5 major impacts snowstorms occurred in the northeast.

In 2014/15, we had the coldest January to March in the entire record for the 10 northeastern states and the District of Columbia. We broke the all-tie record for snowfall in Boston with 110.6 inches of which 100 inches fell in about 5 weeks. February was the coldest month for many places ever. 5 major impact snowstorms occurred again in the northeast.

In 2017/18, the northern states had two brutally cold weeks early with a major snowstorm, then in March four major snows fell. 2017/18 joined 2013/14 and 2014/15 as the only years with 5 such storms in over 6 decades of records.

Along the east coast we have seen record setting snow years and 29 major impact snowstorms for the 10-year period ending 2017/18. No other decade had had more the 10.

**High Impact NESIS Storms by Decade**



A paper, Coleman and Schwartz, 2017 revealed 713 blizzards over the 55 years with 57 federal disaster declarations resulting. Of these 57 declared disasters, more than a half, have occurred since the year 2000. This published scientific study also found that “seasonal blizzard frequencies displayed a distinct upward trend, with a more substantial rise over the past two decades”.

JOURNAL OF APPLIED METEOROLOGY AND CLIMATOLOGY  
Coleman and Schwartz, 2017

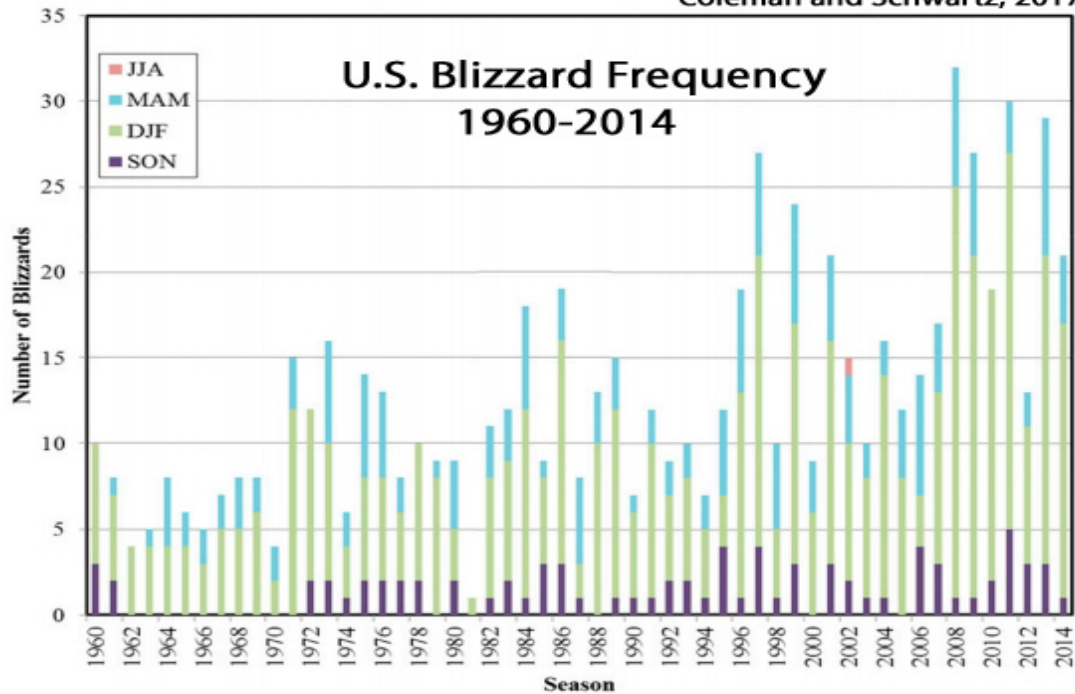


FIG. 1. Annual blizzard frequency for the 1959/60–2013/14 seasons subdivided into 3-month intervals.

In another publication, [Changnon, 2017](#) evaluated heavy 30-day snowfall amounts east of the Rockies in the United States during the period 1900-2016. The comprehensive data assessment identified 507 stations in this long-term climate study.

The author examined the top 30-day heavy snowfall amount and the average of the top five 30-day heavy snowfall amounts. The findings also surprised global warming scientists who warned earlier that snowfall would become less frequent as the globe warmed. The publications abstract reads:

*The northern Great Plains, Great Lakes, Midwest, and Northeast experienced more top five periods [more snow] in the second half of the 117-year period [1958-2016], where most of the southern states experienced top five periods throughout the study period.”*

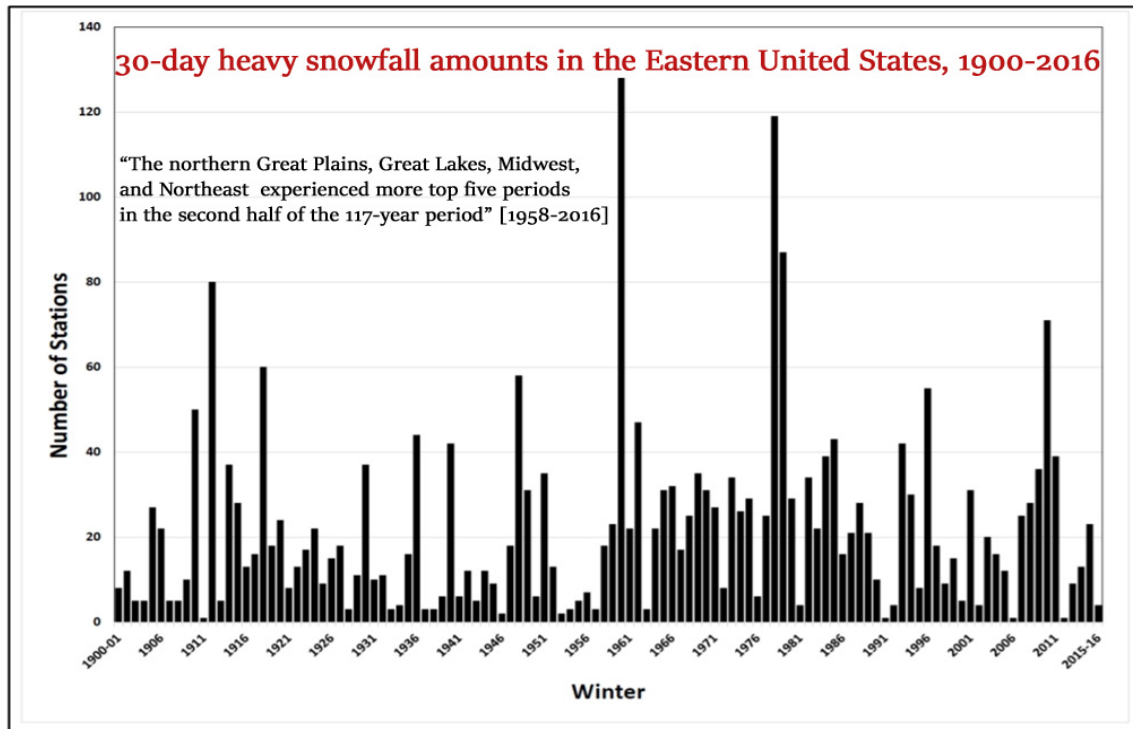


Figure 8. Winter number of stations experiencing one of the top five 30-day heavy snowfall amounts, 1900/01-2015/16.

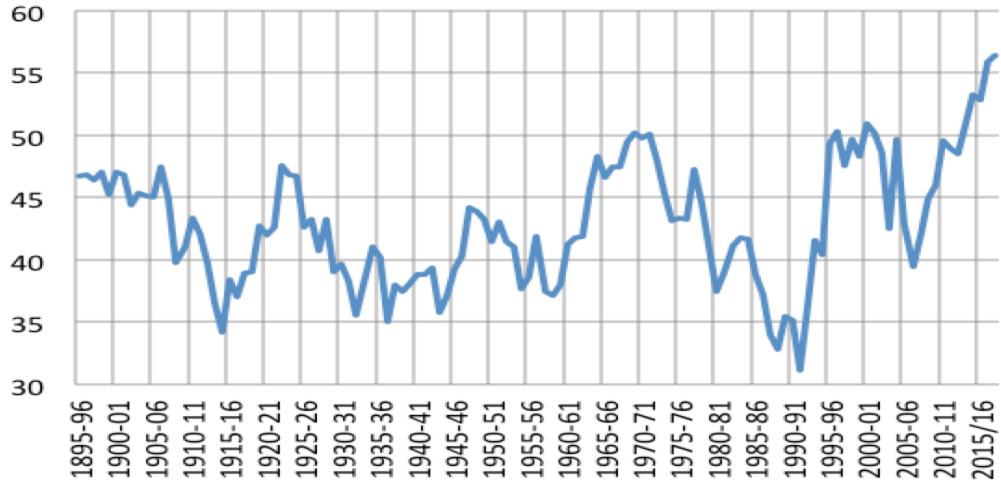
Changnon, 2017

But the media continues to be oblivious to the real data as the hype machine continues to sell its story despite its past failures. The New York Times had an article in February, 2014 titled ‘The end of snow.’ The article documented how snow soon was going to be a distant memory and our kids would never see it except in news reels.

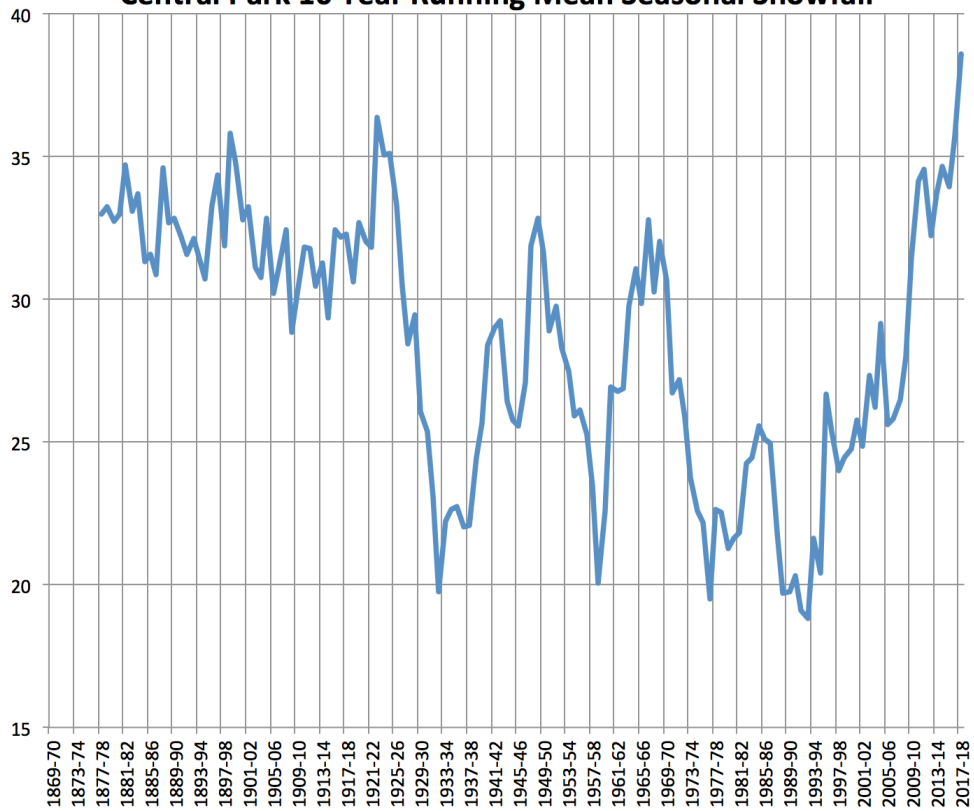
The UCS from the UNH in January 2014 after the winter got off a slow snow start repeated their annual warning about the climate change induced death of the ski and maple sugar industries. But then 2014/15 set records for snowfall in Boston (back to 1872) and many other locations in the northeast into southeastern Canada. In 6 weeks over 100 inches of snow fell in the Boston area with a record 110.6 inches for the winter. It was also the coldest January to March period and in much of the northeast, February 2015 was the coldest month in history.

The recent snowy winters has the 10-year running mean snowfall in Boston at the highest in the entire record back to the 1880s and New York City back to 1869/70.

**Boston 10 Year Running Mean Seasonal Snowfall**



**Central Park 10 Year Running Mean Seasonal Snowfall**



It appears that, for the eastern U.S. areas, the 2014/15 winter's snow blitz may have delivered the most snow since perhaps 1717. That year, the snow was so deep that people could only leave their houses from the second floor, implying actual snow depths of as much as 8 feet or more.



The driver for the 2014/15 winter was the same as in the frigid winters of 1916/17, 1917/18, 1976/77 and 1977/78, 1993/94 and 2002/03 - a pool of warm water in the northeast Pacific.

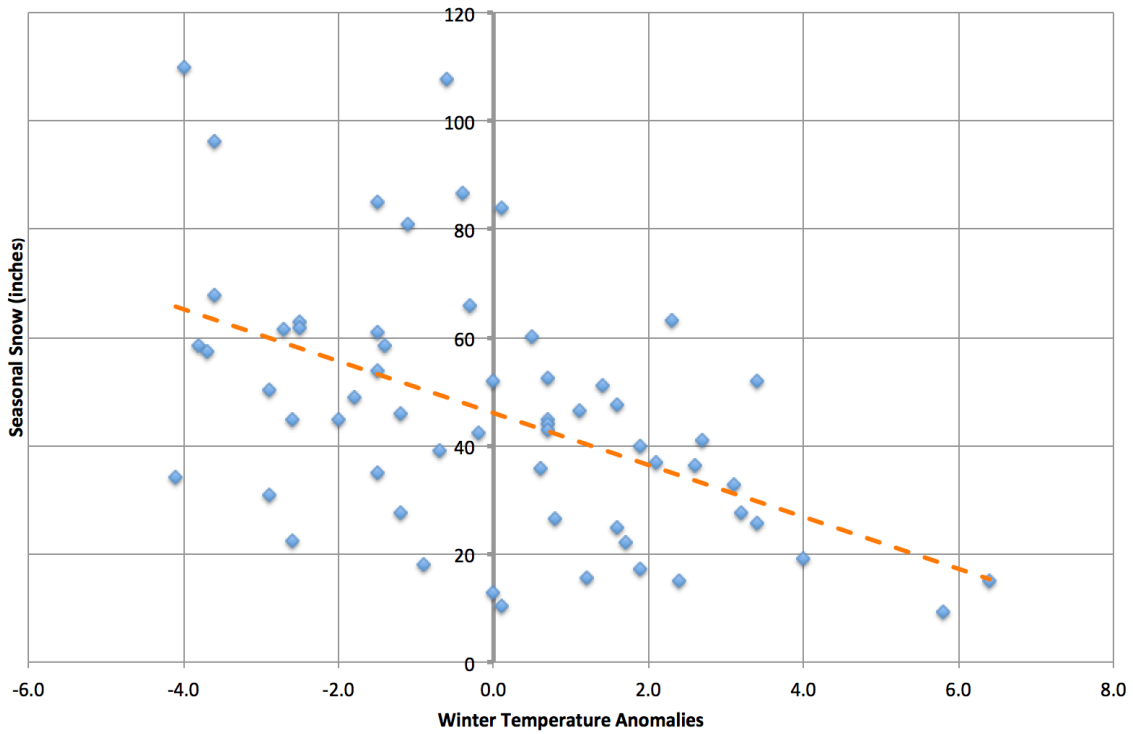
#### ALARMISTS CHANGE THEIR TUNE – PROCLAIM WARMING PRODUCES MORE SNOWS

Alarmists claimed increased snow is consistent with global warming because warmer air holds more moisture. In actual fact, only 1 of the 14 years with more than 60 inches of snow in Boston was warmer than normal.

Snow is favored in COLD winters and increases with cooling not warming. In the 39 days in the heart of 2014/15 winter, when Boston had 100.2 inches of snow, the melted precipitation was 5.69 inches, a ratio of 17.6 to 1. Typical snow to melted precipitation ration is 10 to 12 to 1. The big snows in recent years have come with unusually cold temperatures. Seasonal snow amounts are high in cold winters, low in warmer winters.

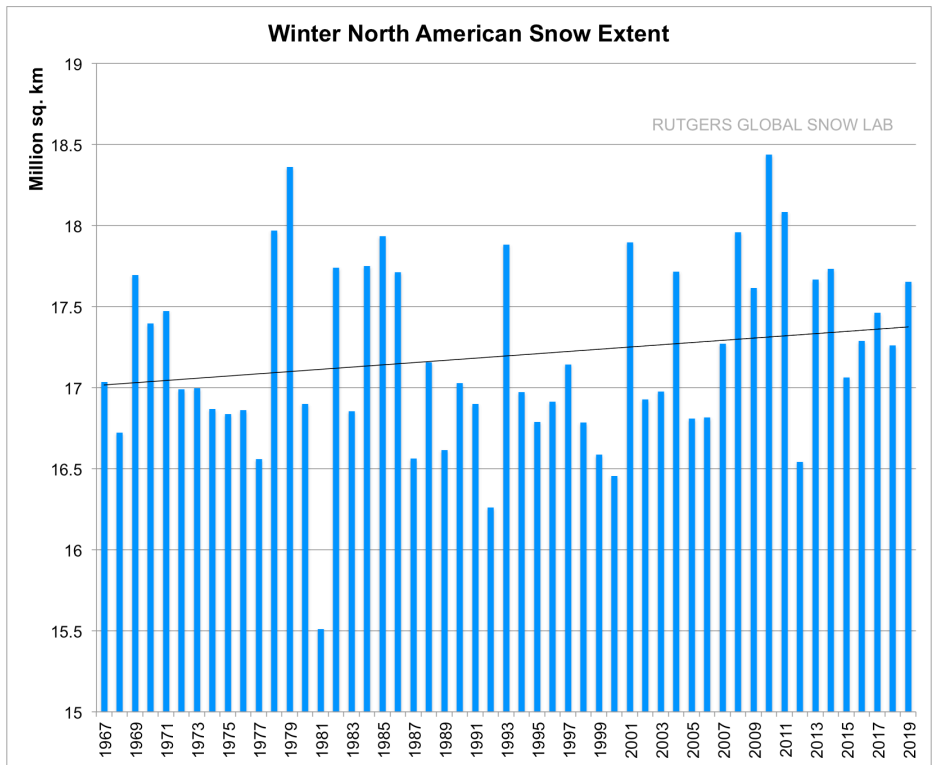
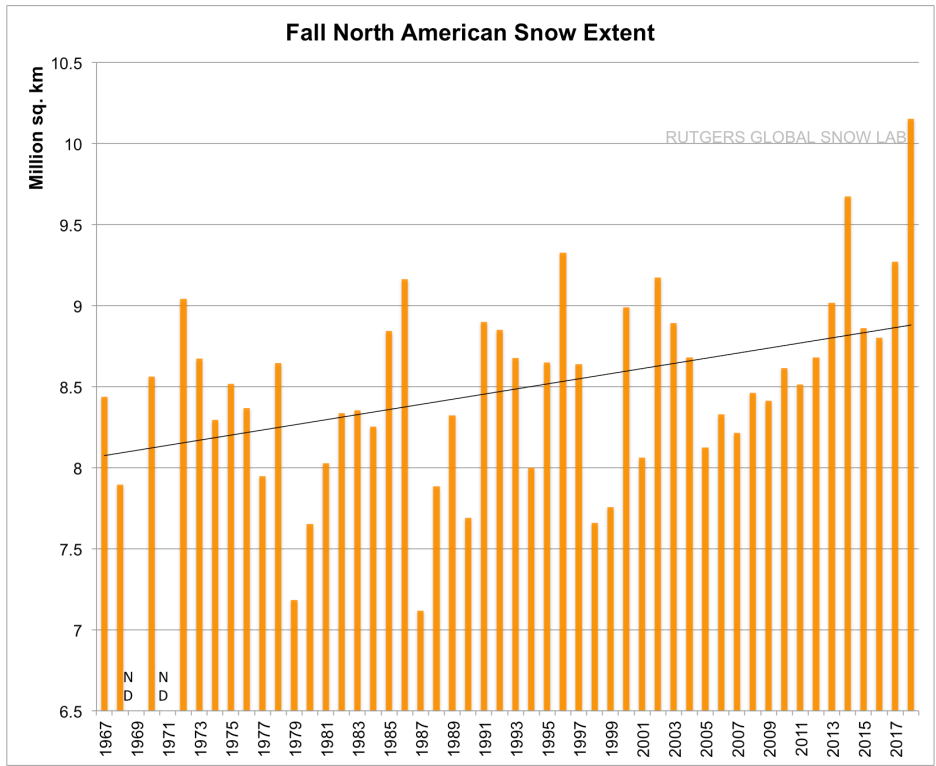


### Seasonal Snowfall Boston vs the Winter Temperature Anomalies

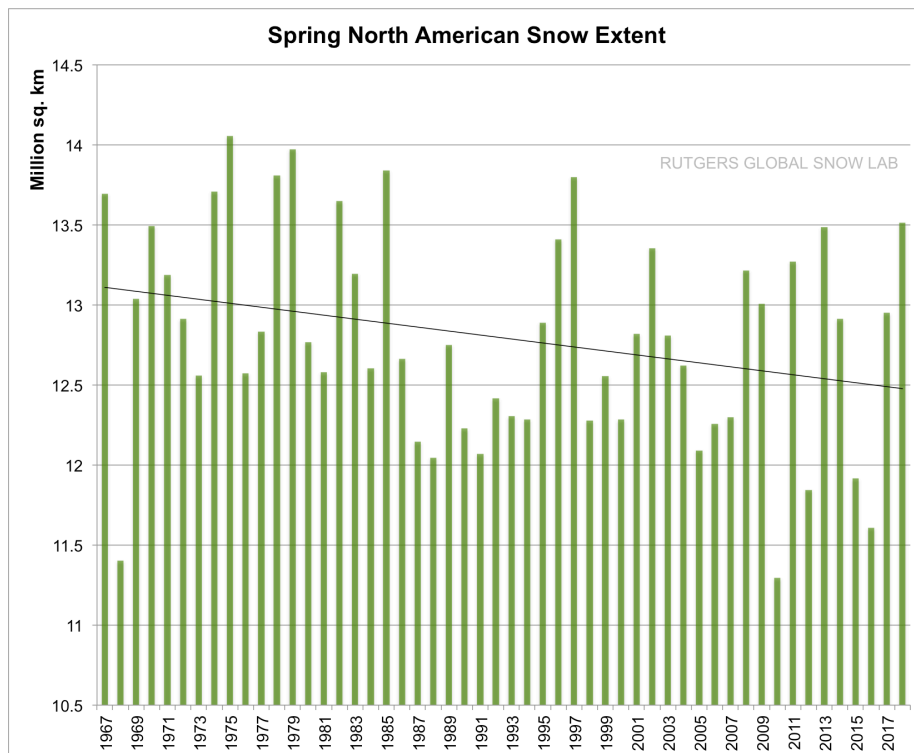


### SNOW SEASONS ARE GROWING SHORTER

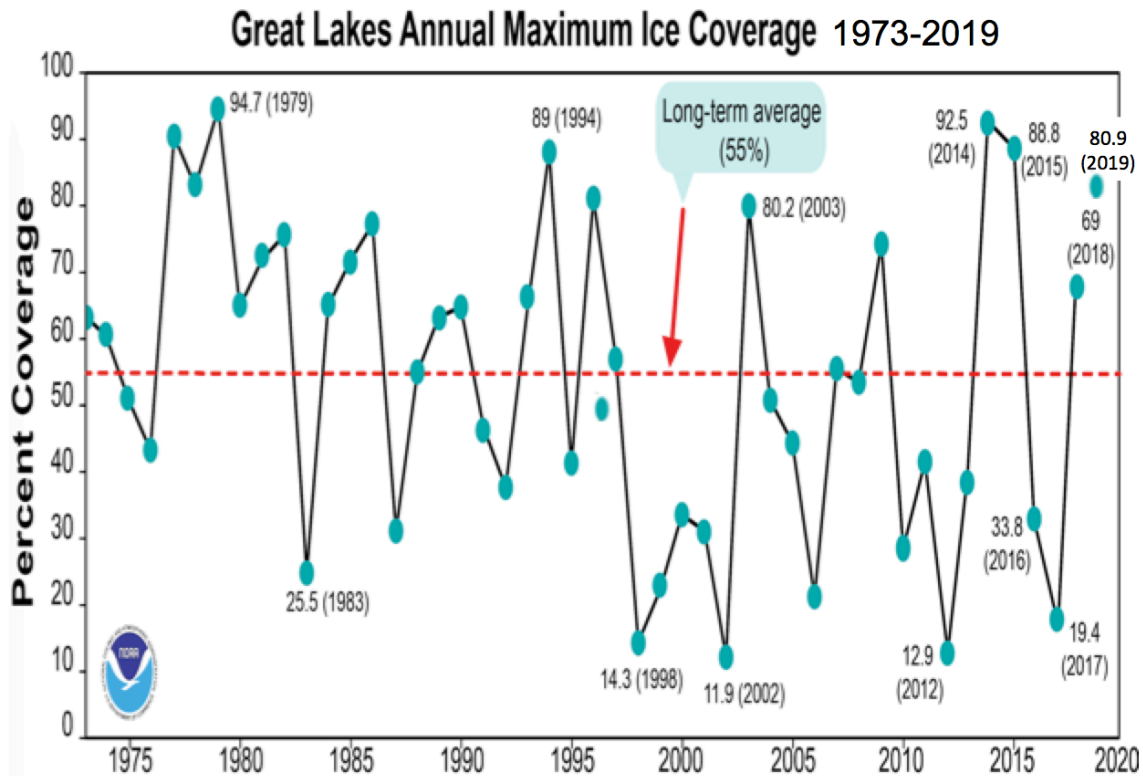
They also claimed that snowcover is shrinking especially in the spring and summer. They neglect to mention the snowcover is increasing in the fall inn the hemisphere and North America (most ever in 2018, 3<sup>rd</sup> most in 2017), and increasing in winter again in the hemisphere and North America.



The spring snow extent is diminishing. But some of this may be due to the change in snowcover determination methodology for – from a manual evaluation to an mostly automated albedo (reflectivity) method which in 2000 had NOAA provide a user beware warning on the web site not to compare snow cover in the warmer months to values before 1999. The brightness diminishes as the snow ages, and melts from the canopy of conifers, which disguises the snow beneath.



Cold air crossing the Great Lakes produces some of the heaviest snows outside of the major mountains in the lower 48 states. The ice builds on the lakes in cold winters. See how 4 of the last 6 years have ranked above the long-term average with 2013/14 averaging second in 46 years of record keeping. The last two winters were well above normal, 2018/19 ranked 6<sup>th</sup>.



Herb Stevens, has been skiing for 65 years at hundreds of the nation’s ski areas. He has served as the skiing weatherman providing ski weather assessments and forecasts in broadcast form for many TV stations. He has worked with the ski area administrators at many resorts. He comments:

*“In my 35 years working in the winter sports industry as a television snow reporter, I visited literally hundreds of ski areas in the U.S. I did not personally observe nor did any resort administrator ever express to me concern over any sort of dwindling seasonal snowfall in any region of this country. More importantly, the DATA speaks to the heart of this question...there is simply no support for the notion that any sort of decreasing trend in snowfall during the winter sports season exists. On the contrary, the data proves decisively that such a claim is utterly baseless.”*

**AUTHORS:**

**Herb Stevens**

Herb Stevens is a Penn State grad who was one of the original on-camera meteorologists at The Weather Channel. After moving on to become the chief meteorologist at WNYT-TV in Albany, New York, he created and produced weekly on-snow ski reports in addition to his daily on air duties. After 5 years, Stevens worked exclusively as a snow reporter, named the segment “The Skiing Weatherman”, and travelled to different resort for taping each week through the winter. Over the following 25 years, Stevens expanded the reach of the reports to 35 television markets and a weekly audience of approximately 20 million viewers across the eastern half of the U.S., visiting hundreds of different ski areas along the way. Stevens, about to embark on his 65<sup>th</sup> year on skis, now forecasts for a number of winter sports resorts, as well as close to 100 golf course superintendents.

### **Joseph D’Aleo**

BS, MS degrees in Meteorology, University of Wisconsin with Masters Thesis on Explosive Development in East Cost Snowstorms

ABD Air Resources NYU

Professor of Meteorology, Department Chair, Lyndon State College

Certified Consultant Meteorologist, Fellow of the AMS, Councilor at the AMS, Chair of the AMS Committee on Weather Analysis and Forecasting

Co- founder and Chief Meteorologist at The Weather Channel, Chief Meteorologist at WSI, Hudson Seven LLC, WeatherBell Analytics LLC